



Playground Fescue

- Built with TigerCool™ Technology which reduces turf temperatures up to 15%.
- IPEMA Certified reducing G-Max shock, perfect for playgrounds.
- K29 Quadruple-Layered Action Backing for greater seam strength and permeability.

GENERAL FEATURES:

Traffic Level:	Moderate to Heavy Traffic
Applications:	Landscape
Blade Colors:	Field Green / Mid-Olive Green

PRODUCT SPECIFICATIONS

Yarn Characteristics
Type: Monofilament PE with Thatch
Composition/Structure: Polyethylene
Denier: 10,800/5,000
Colors: Field Green/Mid-Olive Green
Blade Shape: 3D Curvy W & 3D Curvy N

Turf Characteristics
Pile/Face Weight: Approx. 55 Ounces
Pile Height: Approx. 1.375 Inches
Machine Gauge: 3/8 inch
Thatch Color: Green & Tan
Total Product Weight: Approx 84 Ounces Per Square Yard

Backing Characteristics	
Primary Composition: K29 Quadruple-Layered Action Backing	
Weight: 7.3 Ounces Per Square Yard	Tuft Bind: 10+ Pounds
Finish Coating: Polyurethane 20 Ounces Per Square Yard*	

Manufactured Rolls	
Width: 15 Feet	Length: 100 Feet
Shipping Weight: 876 Pounds*	
Roll Diameter: 24 Inches	

Particulate Infill
Type: Quality Infill
Weight: 1.5-2.5 Lbs Per Sq Ft*†
Colors: Green, Black, or Natural



Main Advantages:

- Designed to truly replicate grass with enhanced recovery
- Heat and frost resistant/ UV stabilized
- No harmful environmental effects, Not water soluble
- Uniquely formulated backing for greater seam strength

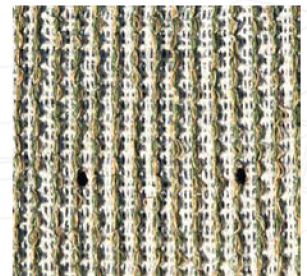
Recommended Maintenance:

Rinse and groom as needed to limit matting

Drainage Rate: 400+ inches of rain per hour per square yard

* Approximate Weight

† For IPEMA Certification, infill must be 2 pounds of Envirofill per sq ft



Artificial grass is made from plastic and should not be subject/exposed to open flames or high heat producing items.